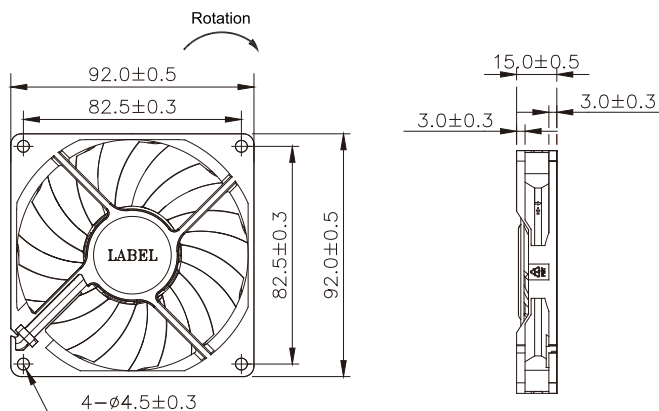


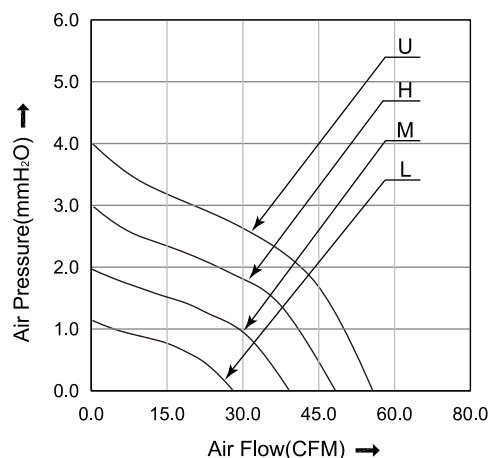
92x92x15 mm

- * Frame: Plastic (Black) 94V-0
- * Impeller: Plastic (Black) 94V-0
- * Lead Wires: UL type or Equivalent, AWG#28, Red +, Black -
- * Operating Temperature: -25°C~+70°C, 5%~90%RH
- * Storage Temperature: -40°C~+80°C, 5%~90%RH
- * Weight: 90.0g

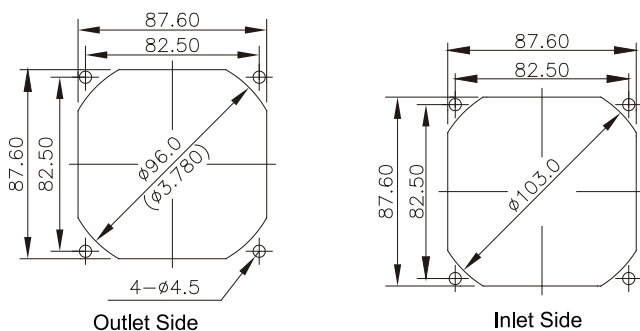
■ Dimensions(Unit:mm)



■ P&Q Curve



■ Mounting panel cutout(Unit:mm)



■ Specifications

Model No.	Rated Voltage	Operating Voltage	Rated Current	Speed	Max. Air Flow		Max. Static Pressure		Noise
	VDC	VDC	A	RPM	m ³ /min	CFM	mmH ₂ O	inH ₂ O	dB
HD9215L12	12	5.0~13.8	0.10	1800	0.739	26.09	1.16	0.045	25.0
HD9215M12	12	5.0~13.8	0.13	2300	1.035	36.55	2.02	0.079	32.5
HD9215H12	12	5.0~13.8	0.21	2800	1.260	44.49	2.95	0.116	37.5
HD9215U12	12	5.0~12.6	0.31	3300	1.453	51.53	3.96	0.156	41.5

Note:

Bearing Type: Ball Bearing-----B, Sleeve Bearing-----S, Hydraulic Bearing-----R

Function description:

A:3rd Pulse Wire F:Tachometer / Speed Sensor R:Alarm/high

Q:Alarm/low S:Alarm/high-low W:PWM Control input