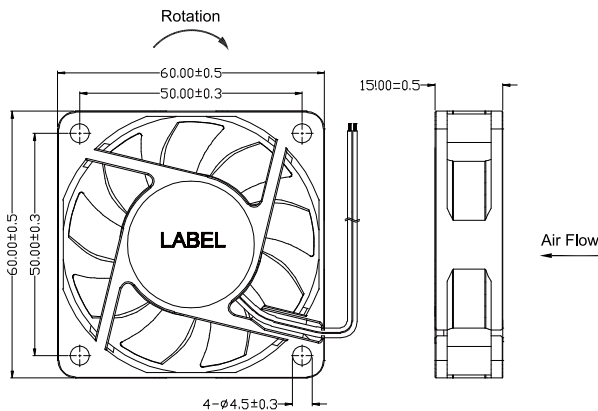


HD6015 SERIES

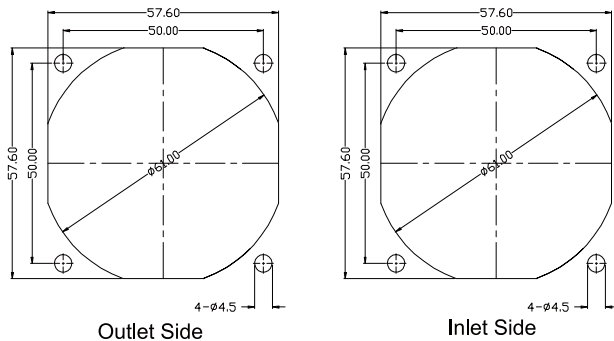
60x60x15 mm

- * Frame: Plastic (Black) 94V-0
- * Impeller: Plastic (Black) 94V-0
- * Lead Wires: UL type or Equivalent, AWG#28, Red +, Black -
- * Operating Temperature: -25°C~+70°C, 5%~90%RH
- * Storage Temperature: -40°C~+80°C, 5%~90%RH
- * Weight: 30.0g

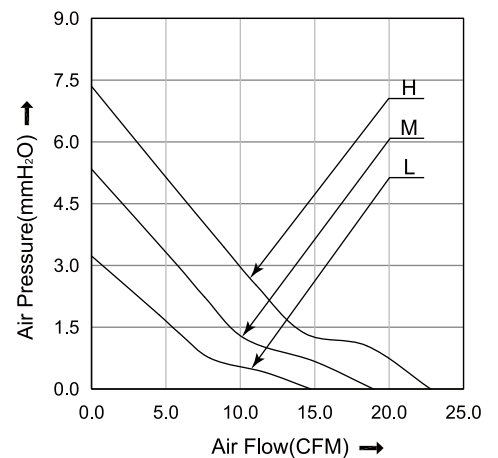
■ Dimensions(Unit:mm)



■ Mounting panel cutout(Unit:mm)



■ P&Q Curve



■ Specifications

Model No.	Rated Voltage	Operating Voltage	Rated Current	Speed	Max. Air Flow		Max. Static Pressure		Noise
	VDC	VDC	A	RPM	m ³ /min	CFM	mmH ₂ O	inH ₂ O	dB
HD6015L05	5	4.0~5.75	0.30	3500	0.42	14.70	3.20	0.13	26.0
HD6015M05	5	4.0~5.75	0.45	4500	0.54	18.90	5.30	0.21	32.5
HD6015L12	12	7.0~13.8	0.15	3500	0.42	14.70	3.20	0.13	26.0
HD6015M12	12	7.0~13.8	0.21	4500	0.54	18.90	5.30	0.21	32.5
HD6015H12	12	7.0~13.8	0.30	5500	0.65	22.80	7.40	0.29	37.5
HD6015L24	24	14.0~27.6	0.09	3500	0.42	14.70	3.20	0.13	26.0
HD6015M24	24	14.0~27.6	0.13	4500	0.54	18.90	5.30	0.21	32.5
HD6015H24	24	14.0~27.6	0.18	5500	0.65	22.80	7.40	0.29	37.5

Note:

Bearing Type: Ball Bearing-----B, Sleeve Bearing-----S, Hydraulic Bearing-----R

Function description:

A:3rd Pulse Wire F:Tachometer / Speed Sensor R:Alarm/high

Q:Alarm/low S:Alarm/high-low W:PWM Control input