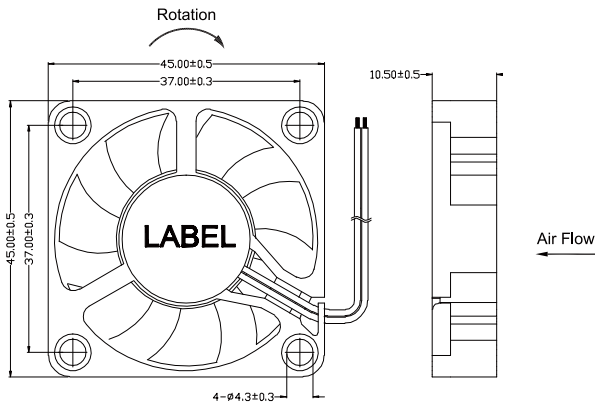


45x45x10 mm

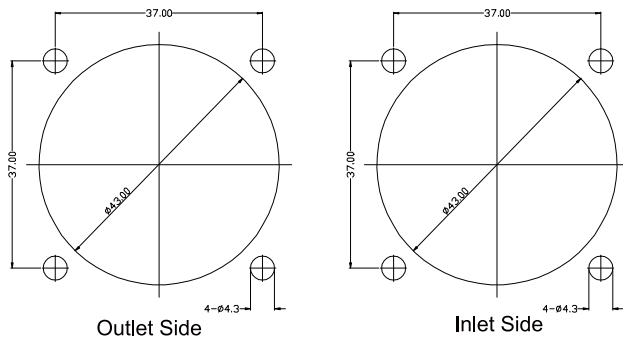
- * Frame: Plastic (Black) 94V-0
- * Impeller: Plastic (Black) 94V-0
- * Lead Wires: UL type or Equivalent,AWG#28,Red +,Black -
- * Operating Temperature: -25°C~+70°C, 5%~90%RH
- * Storage Temperature: -40°C~+80°C, 5%~90%RH
- * Weight: 17.0g



■ Dimensions(Unit:mm)



■ Mounting panel cutout(Unit:mm)



■ Specifications

Model No.	Rated Voltage	Operating Voltage	Rated Current	Speed	Max. Air Flow		Max. Static Pressure		Noise
	VDC	VDC	A	RPM	m ³ /min	CFM	mmH ₂ O	inH ₂ O	dB
HD4510L05	5	4.0~5.75	0.13	4500	0.20	7.20	3.50	0.14	25.5
HD4510M05	5	4.0~5.75	0.18	5500	0.23	8.10	4.30	0.17	30.5
HD4510H05	5	4.0~5.75	0.23	6500	0.26	9.10	5.40	0.21	34.0
HD4510L12	12	7.0~13.8	0.09	4500	0.20	7.20	3.50	0.14	25.5
HD4510M12	12	7.0~13.8	0.13	5500	0.23	8.10	4.30	0.17	30.5
HD4510H12	12	7.0~13.8	0.18	6500	0.26	9.10	5.40	0.21	34.0
HD4510L24	24	14.0~27.6	0.06	4500	0.20	7.20	3.50	0.14	25.5
HD4510M24	24	14.0~27.6	0.09	5500	0.23	8.10	4.30	0.17	30.5
HD4510H24	24	14.0~27.6	0.13	6500	0.26	9.10	5.40	0.21	34.0

Note:

Bearing Type: Ball Bearing-----B, Sleeve Bearing-----S, Hydraulic Bearing-----R

Function description:

A:3rd Pulse Wire F:Techometer / Speed Sensor R:Alarm/high
 Q:Alarm/low S:Alarm/high-low W:PWM Control input

■ P&Q Curve

