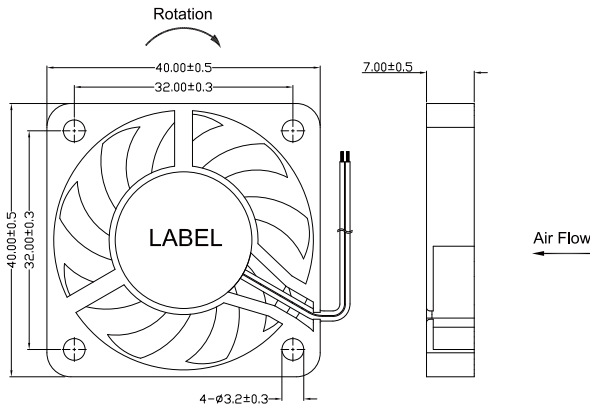


40x40x7 mm

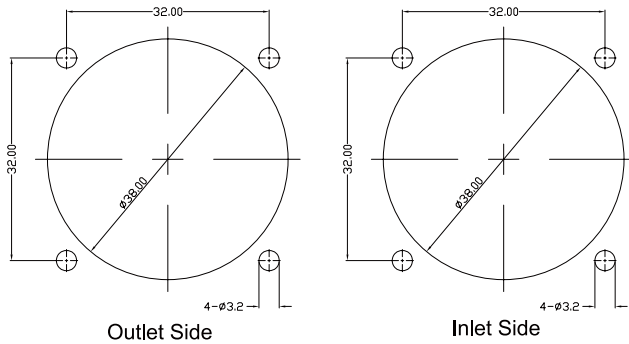
- * Frame: Plastic (Black) 94V-0
- * Impeller: Plastic (Black) 94V-0
- * Lead Wires: UL type or Equivalent, AWG#28, Red +, Black -
- * Operating Temperature: -25°C~+70°C, 5%~90%RH
- * Storage Temperature: -40°C~+80°C, 5%~90%RH
- * Weight: 10.0g



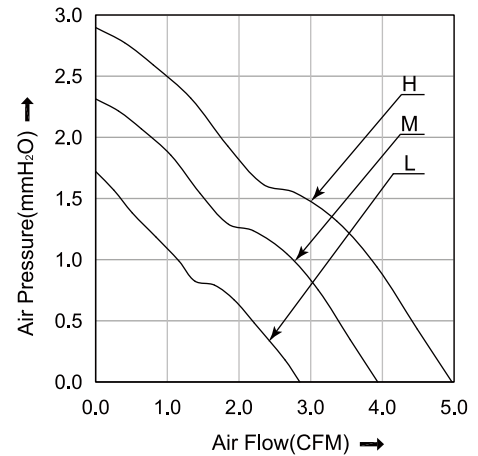
■ Dimensions(Unit:mm)



■ Mounting panel cutout(Unit:mm)



■ P&Q Curve



■ Specifications

Model No.	Rated Voltage	Operating Voltage	Rated Current	Speed	Max. Air Flow		Max. Static Pressure		Noise
	VDC	VDC	A	RPM	m ³ /min	CFM	mmH ₂ O	inH ₂ O	
HD4007L05	5	4.0~5.75	0.18	4000	0.07	2.60	1.80	0.07	21.7
HD4007M05	5	4.0~5.75	0.25	5000	0.11	3.90	2.30	0.09	26.3
HD4007H05	5	4.0~5.75	0.35	6000	0.14	4.90	2.90	0.11	30.5
HD4007L12	12	7.0~13.8	0.09	4000	0.07	2.60	1.80	0.07	21.7
HD4007M12	12	7.0~13.8	0.13	5000	0.11	3.90	2.30	0.09	26.3
HD4007H12	12	7.0~13.8	0.18	6000	0.14	4.90	2.90	0.11	30.5

Note:

Bearing Type: Ball Bearing-----B, Sleeve Bearing-----S, Hydraulic Bearing-----R

Function description:

A:3rd Pulse Wire F:Techometer / Speed Sensor R:Alarm/high
 Q:Alarm/low S:Alarm/high-low W:PWM Control input