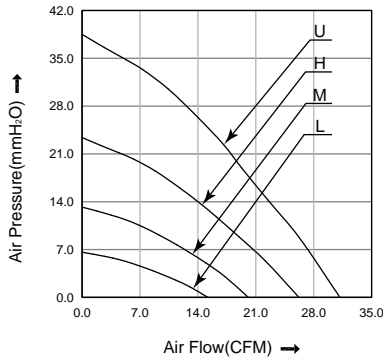


97x94x33 mm

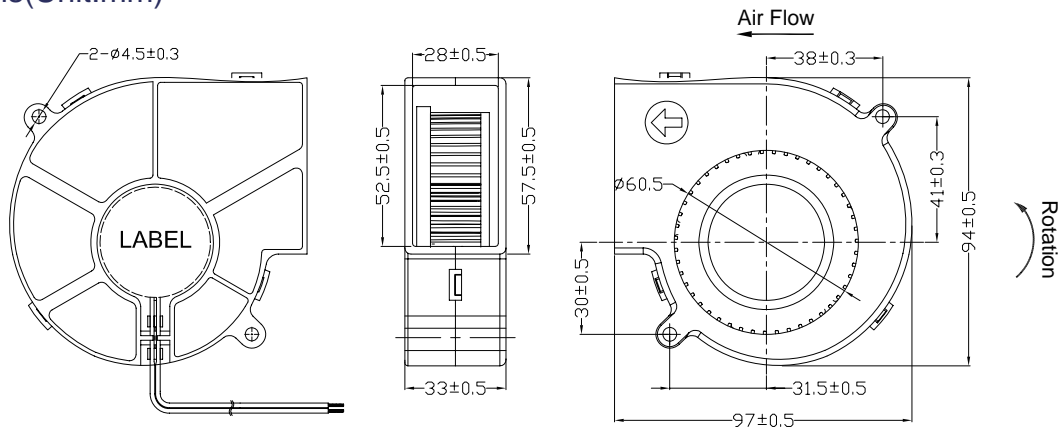
- * Frame: Plastic (Black) 94V-0
- * Impeller: Plastic (Black) 94V-0
- * Lead Wires: UL type or Equivalent, AWG#28, Red +, Black -
- * Operating Temperature: -25°C~+70°C, 5%~90%RH
- * Storage Temperature: -40°C~+80°C, 5%~90%RH
- * Weight: 220.0g



■ P&Q Curve



■ Dimensions (Unit:mm)



■ Specifications

Model No.	Rated Voltage	Operating Voltage	Rated Current	Speed	Max. Air Flow		Max. Static Pressure		Noise
	VDC	VDC			A	RPM	m³/min	CFM	
HB9733L12	12	7.0~13.8	0.23	2200	0.43	15.20	6.60	0.26	36.0
HB9733M12	12	7.0~13.8	0.50	3000	0.57	20.10	13.20	0.52	45.0
HB9733H12	12	7.0~13.8	1.00	3800	0.74	26.20	23.40	0.92	51.0
HB9733U12	12	7.0~13.8	1.20	4500	0.88	31.20	38.50	1.52	56.0
HB9733L24	24	14.0~27.6	0.13	2200	0.43	15.20	6.60	0.26	36.0
HB9733M24	24	14.0~27.6	0.30	3000	0.57	20.10	13.20	0.52	45.0
HB9733H24	24	14.0~27.6	0.50	3800	0.74	26.20	23.40	0.92	51.0
HB9733U24	24	14.0~27.6	0.60	4500	0.88	31.20	38.50	1.52	56.0
HB9733L48	48	28.0~56.0	0.09	2200	0.43	15.20	6.60	0.26	36.0
HB9733M48	48	28.0~56.0	0.15	3000	0.57	20.10	13.20	0.52	45.0
HB9733H48	48	28.0~56.0	0.21	3800	0.74	26.20	23.40	0.92	51.0
HB9733U48	48	28.0~56.0	0.30	4500	0.88	31.20	38.50	1.52	56.0

Note:

Bearing Type: Ball Bearing-----B, Sleeve Bearing-----S, Hydraulic Bearing-----R

Function description:

A:3rd Pulse Wire

F:Techometer / Speed Sensor

R:Alarm/high

Q:Alarm/low S:Alarm/high-low

W:PWM Control input