

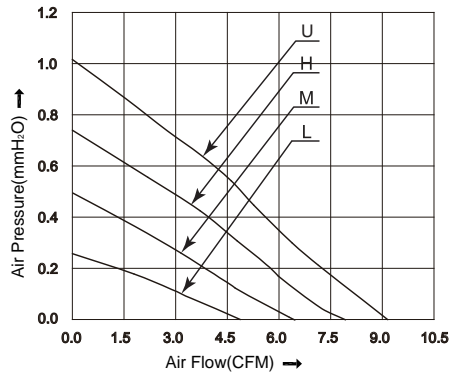
70x65x12.5 mm

- * Frame: Plastic (Black) 94V-0
- * Impeller: Plastic (Black) 94V-0
- * Lead Wires: UL type or Equivalent,AWG#28,Red +,Black -
- * Operating Temperature: -25°C~+70°C, 5%~90%RH
- * Storage Temperature: -40°C~+80°C, 5%~90%RH
- * Weight: 42.0g

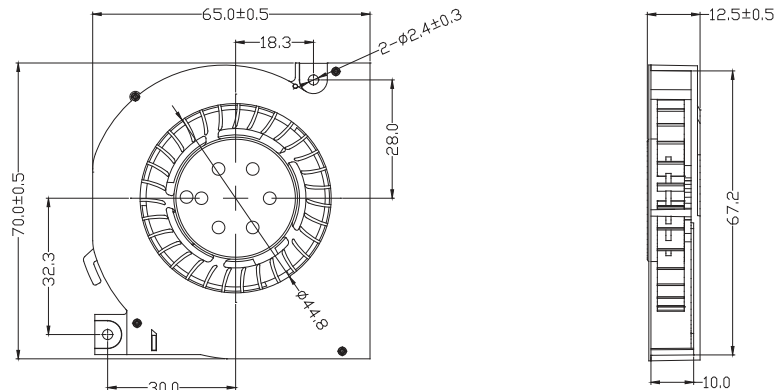
客订



■ P&Q Curve



■ Dimensions(Unit:mm)



■ Specifications

| Model No. | Rated Voltage | Operating Voltage | Rated Current | Speed | Max. Air Flow | | Max. Static Pressure | | Noise |
|-----------|---------------|-------------------|---------------|-------|---------------------|------|----------------------|--------------------|-------|
| | VDC | VDC | A | RPM | m ³ /min | CFM | mmH ₂ O | inH ₂ O | |
| HB7012L05 | 5 | 4.0~5.75 | 0.30 | 3000 | 0.14 | 4.88 | 6.35 | 0.25 | 28.0 |
| HB7012M05 | 5 | 4.0~5.75 | 0.50 | 4000 | 0.18 | 6.44 | 12.44 | 0.49 | 27.1 |
| HB7012H05 | 5 | 4.0~5.75 | 0.80 | 4800 | 0.22 | 7.93 | 18.54 | 0.73 | 40.5 |
| HB7012L12 | 12 | 7.0~13.8 | 0.13 | 3000 | 0.14 | 4.88 | 6.35 | 0.25 | 28.0 |
| HB7012M12 | 12 | 7.0~13.8 | 0.21 | 4000 | 0.18 | 6.44 | 12.44 | 0.49 | 27.1 |
| HB7012H12 | 12 | 7.0~13.8 | 0.32 | 4800 | 0.22 | 7.93 | 18.54 | 0.73 | 40.5 |
| HB7012U12 | 12 | 7.0~13.8 | 0.45 | 5500 | 0.26 | 9.16 | 25.40 | 1.00 | 45.0 |
| HB7012L24 | 24 | 14.0~27.6 | 0.07 | 3000 | 0.14 | 4.88 | 6.35 | 0.25 | 28.0 |
| HB7012M24 | 24 | 14.0~27.6 | 0.11 | 4000 | 0.18 | 6.44 | 12.44 | 0.49 | 27.1 |
| HB7012H24 | 24 | 14.0~27.6 | 0.16 | 4800 | 0.22 | 7.93 | 18.54 | 0.73 | 40.5 |
| HB7012U24 | 24 | 14.0~27.6 | 0.23 | 5500 | 0.26 | 9.16 | 25.40 | 1.00 | 45.0 |

Note:

Bearing Type: Ball Bearing-----B, Sleeve Bearing-----S, Hydraulic Bearing-----R

Function description:

A:3rd Pulse Wire

F:Techometer / Speed Sensor

R:Alarm/high

Q:Alarm/low S:Alarm/high-low

W:PWM Control input