

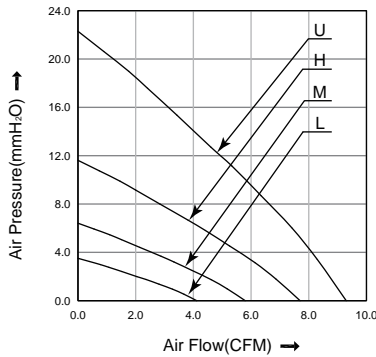
HB6028 SERIES

60x60x28 mm

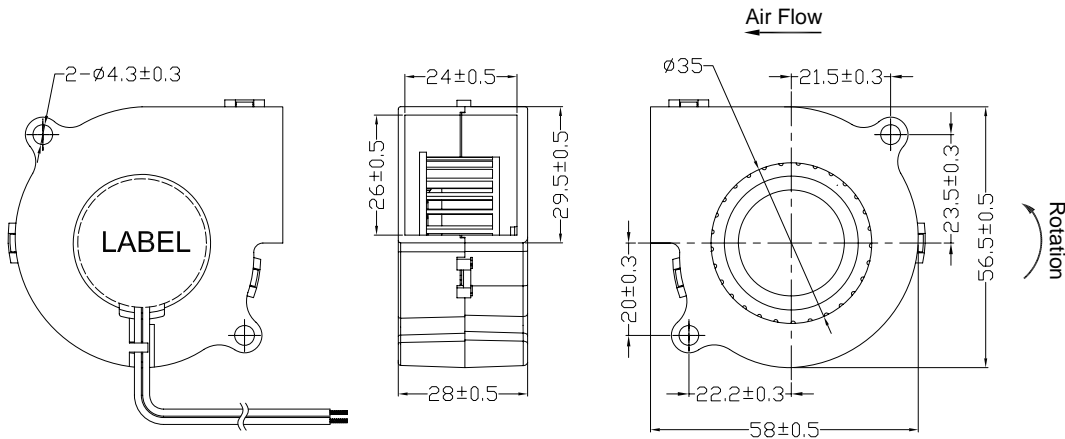
- * Frame: Plastic (Black) 94V-0
- * Impeller: Plastic (Black) 94V-0
- * Lead Wires: UL type or Equivalent, AWG#28, Red +, Black -
- * Operating Temperature: -25°C~+70°C, 5%~90%RH
- * Storage Temperature: -40°C~+80°C, 5%~90%RH
- * Weight: 60.0g



■ P&Q Curve



■ Dimensions(Unit:mm)



■ Specifications

Model No.	Rated Voltage	Operating Voltage	Rated Current	Speed	Max. Air Flow		Max. Static Pressure		Noise
	VDC	VDC	A	RPM	m³/min	CFM	mmH ₂ O	inH ₂ O	dB
HB6028L05	5	4.0~5.75	0.23	3000	0.12	4.10	3.50	0.14	27.1
HB6028M05	5	4.0~5.75	0.35	4000	0.16	5.80	6.40	0.25	36.9
HB6028H05	5	4.0~5.75	0.45	5000	0.22	7.70	11.60	0.46	41.8
HB6028L12	12	7.0~13.8	0.13	3000	0.12	4.10	3.50	0.14	27.1
HB6028M12	12	7.0~13.8	0.18	4000	0.16	5.80	6.40	0.25	36.9
HB6028H12	12	7.0~13.8	0.23	5000	0.22	7.70	11.60	0.46	41.8
HB6028U12	12	7.0~13.8	0.40	6500	0.26	9.30	22.30	0.88	45.5
HB6028L24	24	14.0~27.6	0.06	3000	0.12	4.10	3.50	0.14	27.1
HB6028M24	24	14.0~27.6	0.09	4000	0.16	5.80	6.40	0.25	36.9
HB6028H24	24	14.0~27.6	0.14	5000	0.22	7.70	11.60	0.46	41.8
HB6028U24	24	14.0~27.6	0.23	6500	0.26	9.30	22.30	0.88	45.5

Note:

Bearing Type: Ball Bearing-----B, Sleeve Bearing-----S, Hydraulic Bearing-----R

Function description:

A:3rd Pulse Wire F:Techometer / Speed Sensor R:Alarm/high
 Q:Alarm/low S:Alarm/high-low W:PWM Control input