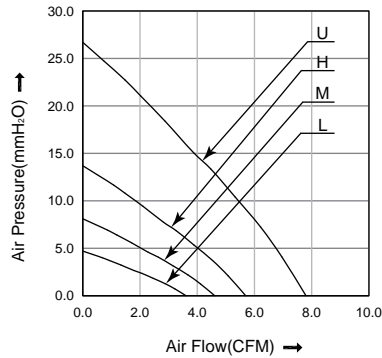


60x60x25 mm

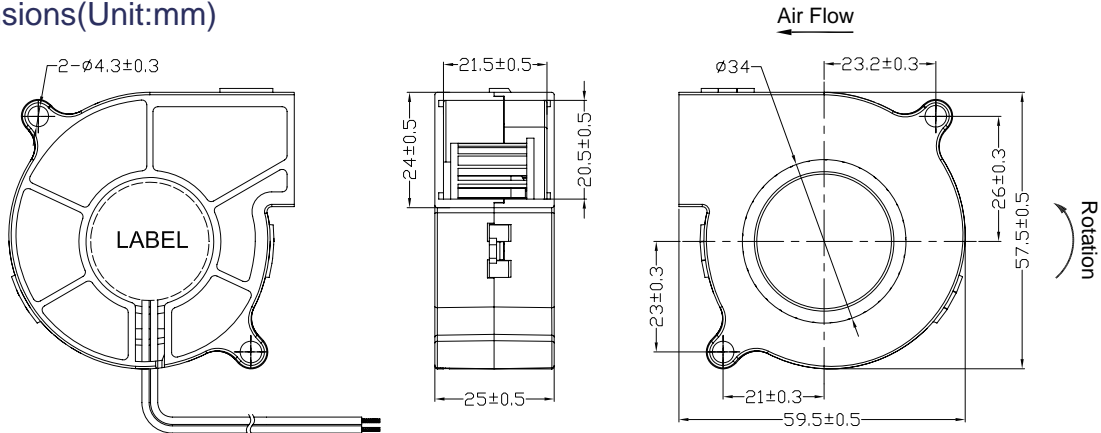
- * Frame: Plastic (Black) 94V-0
- * Impeller: Plastic (Black) 94V-0
- * Lead Wires: UL type or Equivalent,AWG#28,Red +,Black -
- * Operating Temperature: -25°C~+70°C, 5%~90%RH
- * Storage Temperature: -40°C~+80°C, 5%~90%RH
- * Weight: 62.0g



■ P&Q Curve



■ Dimensions (Unit:mm)



■ Specifications

Model No.	Rated Voltage	Operating Voltage	Rated Current	Speed	Max. Air Flow		Max. Static Pressure		Noise
	VDC	VDC			A	RPM	m ³ /min	CFM	
HB6025L05	5	4.0~5.75	0.23	3000	0.10	3.60	4.70	0.19	26.4
HB6025M05	5	4.0~5.75	0.35	4000	0.13	4.60	8.10	0.32	30.6
HB6025H05	5	4.0~5.75	0.45	5000	0.16	5.70	13.70	0.54	36.8
HB6025L12	12	7.0~13.8	0.13	3000	0.10	3.60	4.70	0.19	26.4
HB6025M12	12	7.0~13.8	0.18	4000	0.13	4.60	8.10	0.32	30.6
HB6025H12	12	7.0~13.8	0.23	5000	0.16	5.70	13.70	0.54	36.8
HB6025U12	12	7.0~13.8	0.40	6500	0.22	7.80	26.70	1.05	44.7
HB6025L24	24	14.0~27.6	0.06	3000	0.10	3.60	4.70	0.19	26.4
HB6025M24	24	14.0~27.6	0.09	4000	0.13	4.60	8.10	0.32	30.6
HB6025H24	24	14.0~27.6	0.14	5000	0.16	5.70	13.70	0.54	36.8
HB6025U24	24	14.0~27.6	0.23	6500	0.22	7.80	26.70	1.05	44.7
HB6025M48	48	28.0~56.0	0.06	4000	0.13	4.60	8.10	0.32	30.6
HB6025H48	48	28.0~56.0	0.09	5000	0.16	5.70	13.70	0.54	36.8
HB6025U48	48	28.0~56.0	0.14	6500	0.22	7.80	26.70	1.05	44.7

Note:

Bearing Type: Ball Bearing-----B, Sleeve Bearing-----S, Hydraulic Bearing-----R

Function description:

A:3rd Pulse Wire

F:Techometer / Speed Sensor

R:Alarm/high

Q:Alarm/low S:Alarm/high-low

W:PWM Control input