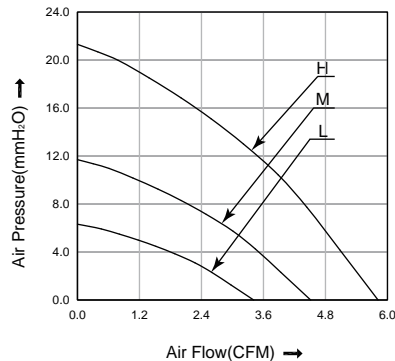


50x50x20 mm

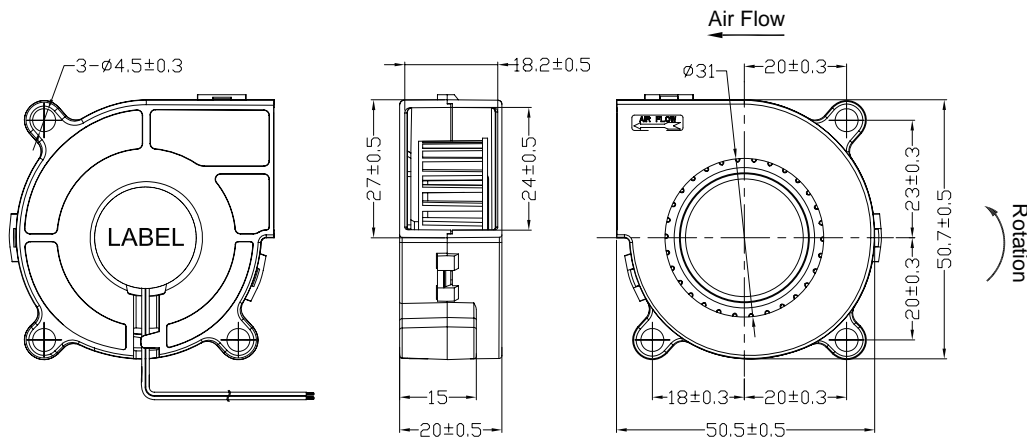
- * Frame: Plastic (Black) 94V-0
- * Impeller: Plastic (Black) 94V-0
- * Lead Wires: UL type or Equivalent,AWG#28,Red +,Black -
- * Operating Temperature: -25°C~+70°C, 5%~90%RH
- * Storage Temperature: -40°C~+80°C, 5%~90%RH
- * Weight: 28.0g



■ P&Q Curve



■ Dimensions(Unit:mm)



■ Specifications

Model No.	Rated Voltage	Operating Voltage	Rated Current	Speed	Max. Air Flow		Max. Static Pressure		Noise
	VDC	VDC	A	RPM	m ³ /min	CFM	mmH ₂ O	inH ₂ O	
HB5020L05	5	4.0~5.75	0.18	4000	0.10	3.40	6.30	0.25	31.5
HB5020M05	5	4.0~5.75	0.32	5000	0.13	4.50	11.70	0.46	39.1
HB5020H05	5	4.0~5.75	0.50	6000	0.16	5.80	21.30	0.84	42.2
HB5020L12	12	7.0~13.8	0.09	4000	0.10	3.40	6.30	0.25	31.5
HB5020M12	12	7.0~13.8	0.18	5000	0.13	4.50	11.70	0.46	39.1
HB5020H12	12	7.0~13.8	0.32	6000	0.16	5.80	21.30	0.84	42.2
HB5020L24	24	14.0~27.6	0.06	4000	0.10	3.40	6.30	0.25	31.5
HB5020M24	24	14.0~27.6	0.09	5000	0.13	4.50	11.70	0.46	39.1
HB5020H24	24	14.0~27.6	0.14	6000	0.16	5.80	21.30	0.84	42.2

Note:

Bearing Type: Ball Bearing-----B, Sleeve Bearing-----S, Hydraulic Bearing-----R

Function description:

A:3rd Pulse Wire

F:Techometer / Speed Sensor

R:Alarm/high

Q:Alarm/low S:Alarm/high-low

W:PWM Control input