

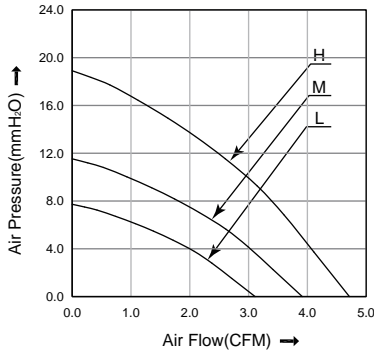
# HB5015 D SERIES

## 50x50x15 mm

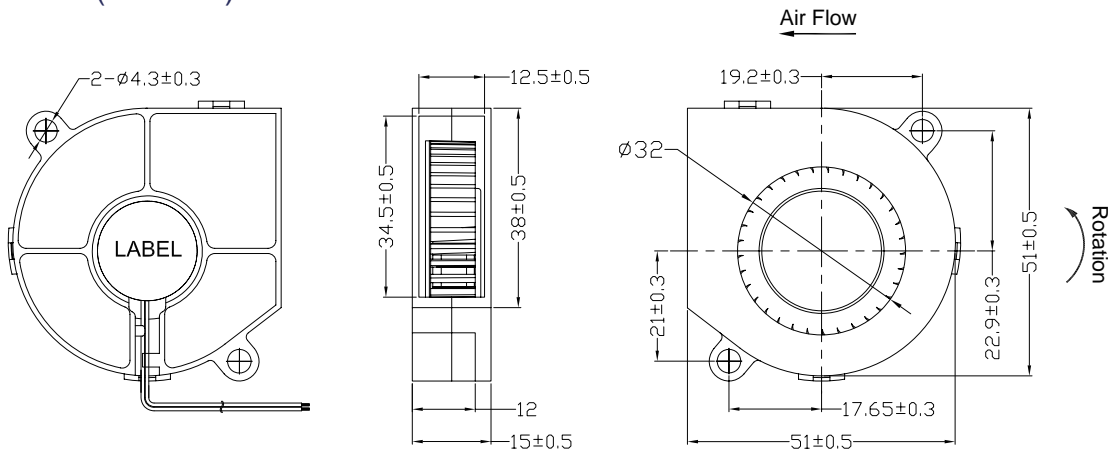
- \* Frame: Plastic (Black) 94V-0
- \* Impeller: Plastic (Black) 94V-0
- \* Lead Wires: UL type or Equivalent,AWG#28,Red +,Black -
- \* Operating Temperature: -25°C~+70°C, 5%~90%RH
- \* Storage Temperature: -40°C~+80°C, 5%~90%RH
- \* Weight: 26.0g



### ■ P&Q Curve



### ■ Dimensions(Unit:mm)



### ■ Specifications

Model No.	Rated Voltage	Operating Voltage	Rated Current	Speed	Max. Air Flow		Max. Static Pressure		Noise
	VDC	VDC	A	RPM	m <sup>3</sup> /min	CFM	mmH <sub>2</sub> O	inH <sub>2</sub> O	dB
HB5015L05	5	4.0~5.75	0.23	4000	0.09	3.10	7.70	0.30	31.7
HB5015M05	5	4.0~5.75	0.35	5000	0.11	3.90	11.50	0.45	38.2
HB5015H05	5	4.0~5.75	0.50	6000	0.13	4.70	18.90	0.74	42.8
HB5015L12	12	7.0~13.8	0.09	4000	0.09	3.10	7.70	0.30	31.7
HB5015M12	12	7.0~13.8	0.14	5000	0.11	3.90	11.50	0.45	38.2
HB5015H12	12	7.0~13.8	0.23	6000	0.13	4.70	18.90	0.74	42.8
HB5015L24	24	14.0~27.6	0.06	4000	0.09	3.10	7.70	0.30	31.7
HB5015M24	24	14.0~27.6	0.09	5000	0.11	3.90	11.50	0.45	38.2
HB5015H24	24	14.0~27.6	0.14	6000	0.13	4.70	18.90	0.74	42.8

Note:

Bearing Type: Ball Bearing-----B, Sleeve Bearing-----S, Hydraulic Bearing-----R

Function description:

A:3rd Pulse Wire      F:Techometer / Speed Sensor      R:Alarm/high  
Q:Alarm/low      S:Alarm/high-low      W:PWM Control input