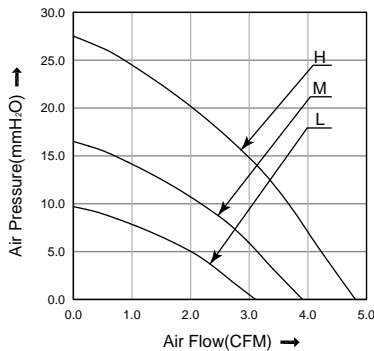
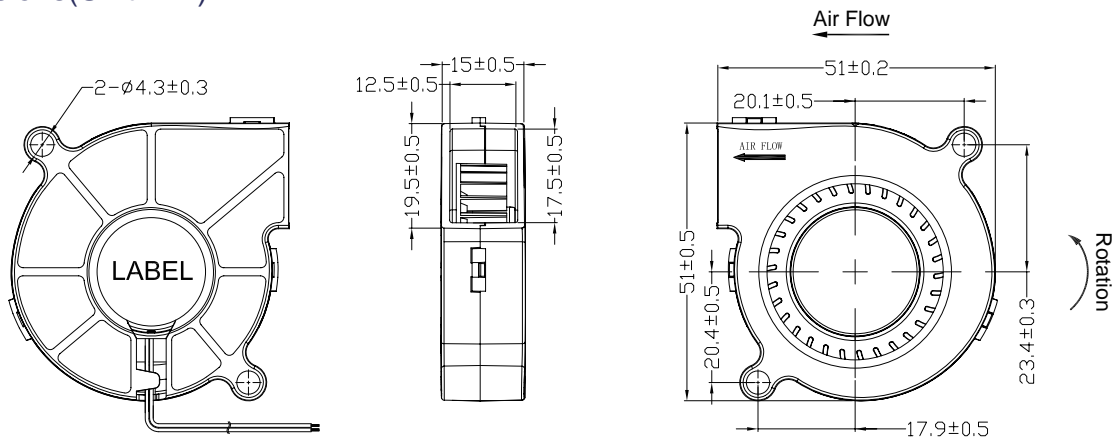


50x50x15 mm

- * Frame: Plastic (Black) 94V-0
- * Impeller: Plastic (Black) 94V-0
- * Lead Wires: UL type or Equivalent,AWG#28,Red +,Black -
- * Operating Temperature: -25°C~+70°C, 5%~90%RH
- * Storage Temperature: -40°C~+80°C, 5%~90%RH
- * Weight: 26.0g



■ Dimensions(Unit:mm)



■ Specifications

Model No.	Rated Voltage	Operating Voltage	Rated Current	Speed	Max. Air Flow		Max. Static Pressure		Noise
	VDC	VDC	A	RPM	m ³ /min	CFM	mmH ₂ O	inH ₂ O	dB
HB5015L05	5	4.0~5.75	0.23	4000	0.09	3.10	9.70	0.38	31.2
HB5015M05	5	4.0~5.75	0.35	5000	0.11	3.90	16.50	0.65	39.2
HB5015H05	5	4.0~5.75	0.50	6000	0.14	4.80	27.50	1.08	42.7
HB5015L12	12	7.0~13.8	0.09	4000	0.09	3.10	9.70	0.38	31.2
HB5015M12	12	7.0~13.8	0.14	5000	0.11	3.90	16.50	0.65	39.2
HB5015H12	12	7.0~13.8	0.23	6000	0.14	4.80	27.50	1.08	42.7
HB5015L24	24	14.0~27.6	0.06	4000	0.09	3.10	9.70	0.38	31.2
HB5015M24	24	14.0~27.6	0.09	5000	0.11	3.90	16.50	0.65	39.2
HB5015H24	24	14.0~27.6	0.14	6000	0.14	4.80	27.50	1.08	42.7

Note:

Bearing Type: Ball Bearing-----B, Sleeve Bearing-----S, Hydraulic Bearing-----R

Function description:

A:3rd Pulse Wire

F:Techometer / Speed Sensor

R:Alarm/high

Q:Alarm/low S:Alarm/high-low

W:PWM Control input