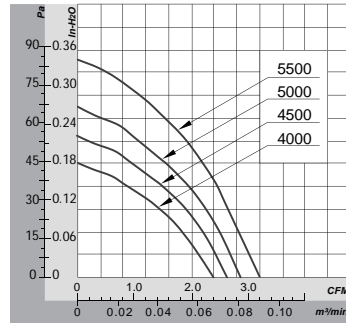


45x45x10 mm

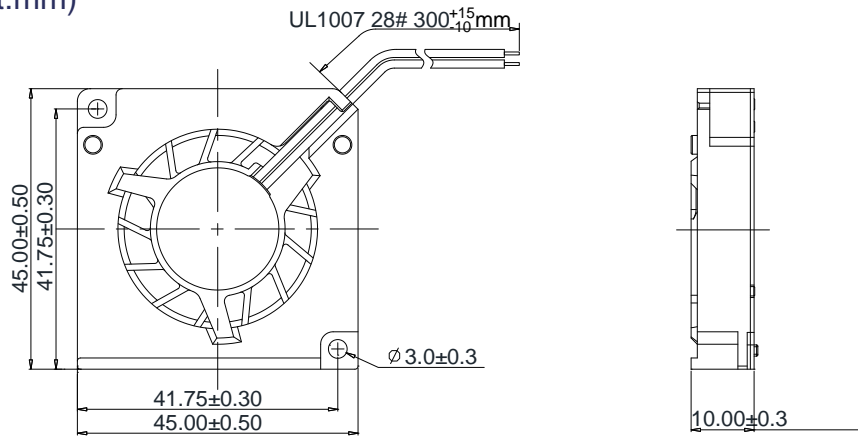
- * Frame: Plastic (Black) 94V-0
- * Impeller: Plastic (Black) 94V-0
- * Lead Wires: UL type or Equivalent,AWG#28,Red +,Black -
- * Operating Temperature: -25°C~+70°C, 5%~90%RH
- * Storage Temperature: -40°C~+80°C, 5%~90%RH
- * Weight: 28.0g



■ P&Q Curve



■ Dimensions(Unit:mm)



■ Specifications

Model No.	Rated Voltage	Operating Voltage	Rated Current	Speed	Max. Air Flow		Max. Static Pressure		Noise
	VDC	VDC	A	RPM	m³/min	CFM	mmH ₂ O	inH ₂ O	dB
HB4510D05	5	4.0~5.75	0.15	4000	0.07	2.39	4.57	0.18	25.8
HB4510L05	5	4.0~5.75	0.20	4500	0.07	2.62	5.58	0.22	27.9
HB4510M05	5	4.0~5.75	0.25	5000	0.08	2.87	6.85	0.27	29.9
HB4510H05	5	4.0~5.75	0.30	5500	0.09	3.18	8.63	0.34	33.5
HB4510D12	12	7.0~13.8	0.08	4000	0.07	2.39	4.57	0.18	25.8
HB4510L12	12	7.0~13.8	0.10	4500	0.07	2.62	5.58	0.22	27.9
HB4510M12	12	7.0~13.8	0.12	5000	0.08	2.87	6.85	0.27	29.9
HB4510H12	12	7.0~13.8	0.15	5500	0.09	3.18	8.63	0.34	33.5

Note:

Bearing Type: Ball Bearing-----B, Sleeve Bearing-----S, Hydraulic Bearing-----R

Function description:

A:3rd Pulse Wire F:Techometer / Speed Sensor R:Alarm/high
 Q:Alarm/low S:Alarm/high-low W:PWM Control input