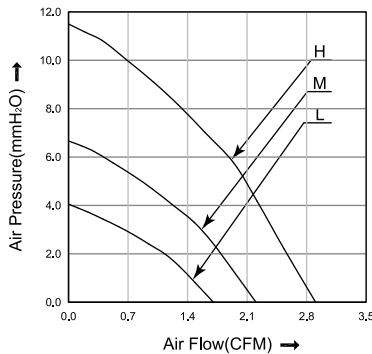


40x40x20 mm

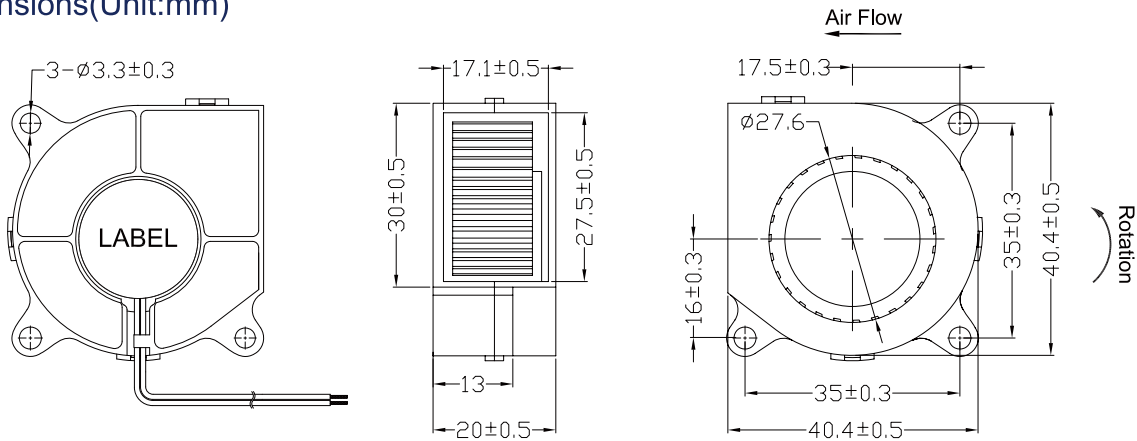
- * Frame: Plastic (Black) 94V-0
- * Impeller: Plastic (Black) 94V-0
- * Lead Wires: UL type or Equivalent, AWG#28, Red +, Black -
- * Operating Temperature: -25°C~+70°C, 5%~90%RH
- * Storage Temperature: -40°C~+80°C, 5%~90%RH
- * Weight: 24.0g



■ P&Q Curve



■ Dimensions(Unit:mm)



■ Specifications

Model No.	Rated Voltage	Operating Voltage	Rated Current	Speed	Max. Air Flow		Max. Static Pressure		Noise
	VDC	VDC	A	RPM	m ³ /min	CFM	mmH ₂ O	inH ₂ O	dB
HB4020L05	5	4.0~5.75	0.18	4000	0.05	1.70	4.10	0.16	22.7
HB4020M05	5	4.0~5.75	0.30	5500	0.06	2.20	6.70	0.26	30.5
HB4020H05	5	4.0~5.75	0.40	7000	0.08	2.90	11.50	0.45	37.8
HB4020L12	12	7.0~13.8	0.09	4000	0.05	1.70	4.10	0.16	22.7
HB4020M12	12	7.0~13.8	0.14	5500	0.06	2.20	6.70	0.26	30.5
HB4020H12	12	7.0~13.8	0.23	7000	0.08	2.90	11.50	0.45	37.8
HB4020L24	24	14.0~27.6	0.06	4000	0.05	1.70	4.10	0.16	22.7
HB4020M24	24	14.0~27.6	0.09	5500	0.06	2.20	6.70	0.26	30.5
HB4020H24	24	14.0~27.6	0.14	7000	0.08	2.90	11.50	0.45	37.8

Note:

Bearing Type: Ball Bearing-----B, Sleeve Bearing-----S, Hydraulic Bearing-----R

Function description:

A:3rd Pulse Wire F:Techometer / Speed Sensor R:Alarm/high
 Q:Alarm/low S:Alarm/high-low W:PWM Control input