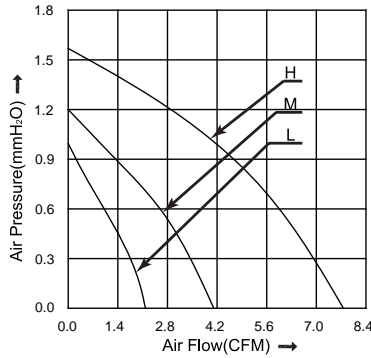


## 30x30x10 mm

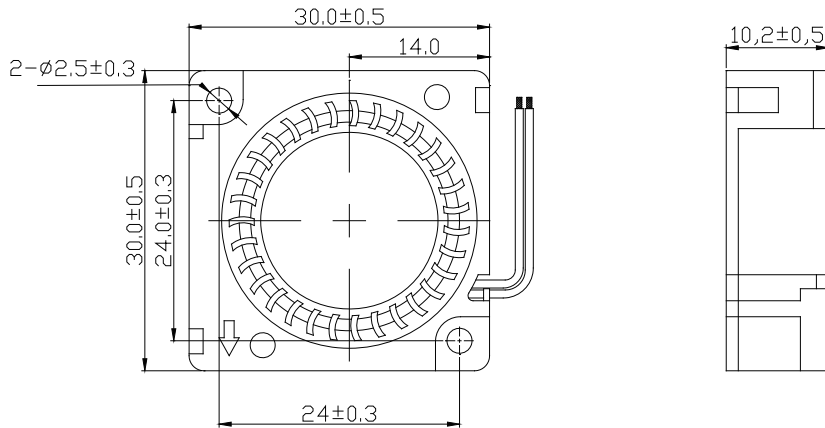
- \* Frame: Plastic (Black) 94V-0
- \* Impeller: Plastic (Black) 94V-0
- \* Lead Wires: UL type or Equivalent,AWG#28,Red +,Black -
- \* Operating Temperature: -25°C~+70°C, 5%~90%RH
- \* Storage Temperature: -40°C~+80°C, 5%~90%RH
- \* Weight: 12.0g



### ■ P&Q Curve



### ■ Dimensions(Unit:mm)



### ■ Specifications

Model No.	Rated Voltage	Operating Voltage	Rated Current	Speed	Max. Air Flow		Max. Static Pressure		Noise
	VDC	VDC	A	RPM	m <sup>3</sup> /min	CFM	mmH <sub>2</sub> O	inH <sub>2</sub> O	
HB3010L05	5	4.0~5.75	0.15	7000	0.028	1.00	2.03	0.08	24.0
HB3010M05	5	4.0~5.75	0.21	9000	0.034	1.20	4.06	0.16	28.0
HB3010H05	5	4.0~5.75	0.35	12000	0.044	1.57	7.62	0.30	35.0
HB3010L12	12	7.0~13.8	0.09	7000	0.028	1.00	2.03	0.08	24.0
HB3010M12	12	7.0~13.8	0.13	9000	0.034	1.20	4.06	0.16	28.0
HB3010H12	12	7.0~13.8	0.18	12000	0.044	1.57	7.62	0.30	35.0

Note:

Bearing Type: Ball Bearing-----B, Sleeve Bearing-----S, Hydraulic Bearing-----R

Function description:

A:3rd Pulse Wire

F:Techometer / Speed Sensor

R:Alarm/high

Q:Alarm/low S:Alarm/high-low

W:PWM Control input